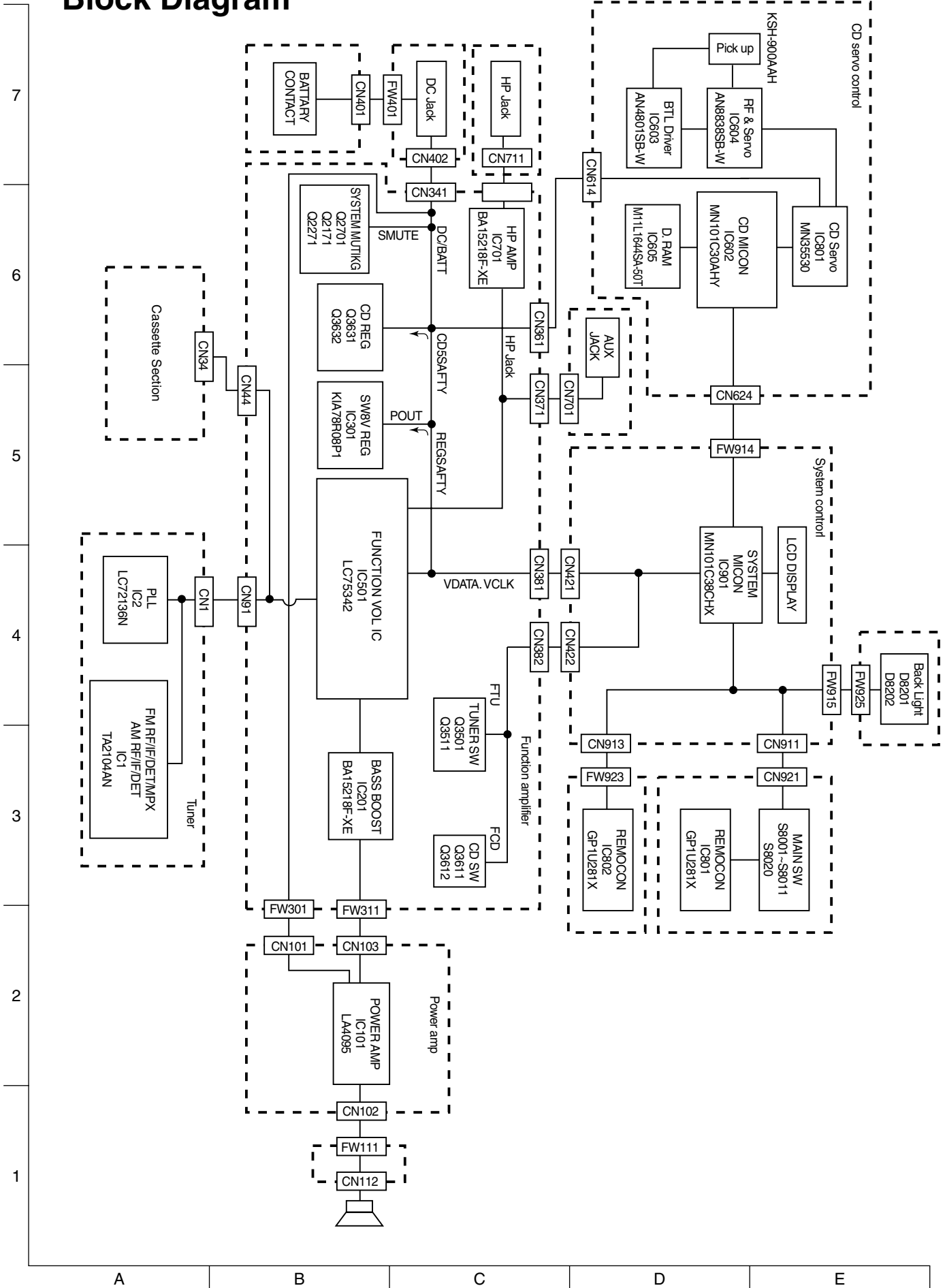


Safety Precautions

In regard with component parts appearing on the silk-screen printed side (parts side) of the PWB diagrams, the parts that are printed over with black such as the resistor (■), diode (▣) and ICP (●) or identified by the "△" mark nearby are critical for safety.

When replacing them, be sure to use the parts of the same type and rating as specified by the manufacturer.
(Except the J and C version)

Block Diagram



— MEMO —

Standard schematic diagrams

System control circuit

7

6

5

4

3

2

1

- NOTES**
1. VOLTAGES ARE DC-MEASURED WITH A DIGITAL VOLT METER OR OSCILLOSCOPE WITHOUT INPUT SIGNAL. CONDITION --- CD STOP AT AC SUPPLY VOL: 120V
 2. UNLESS OTHERWISE SPECIFIED, RESISTORS ARE 1/16W ±5% MG RESISTOR. ALL RESISTANCE VALUES ARE IN OHM (Ω).
 3. ALL CAPACITORS ARE CERAMIC CAPACITOR OR MYLAR CAPACITOR. ALL CAPACITANCE VALUES ARE IN PICO-F (pF).
 4. ALL INDUCTANCE VALUES ARE IN MILLI-HENRY (mH).
 5. E-CAPACITORS ARE SHOWN IN THE FORM OF CAPACITANCE (F)/RATED VOLTAGE (V).
 6. ALL DIODES ARE 1SS133-T2

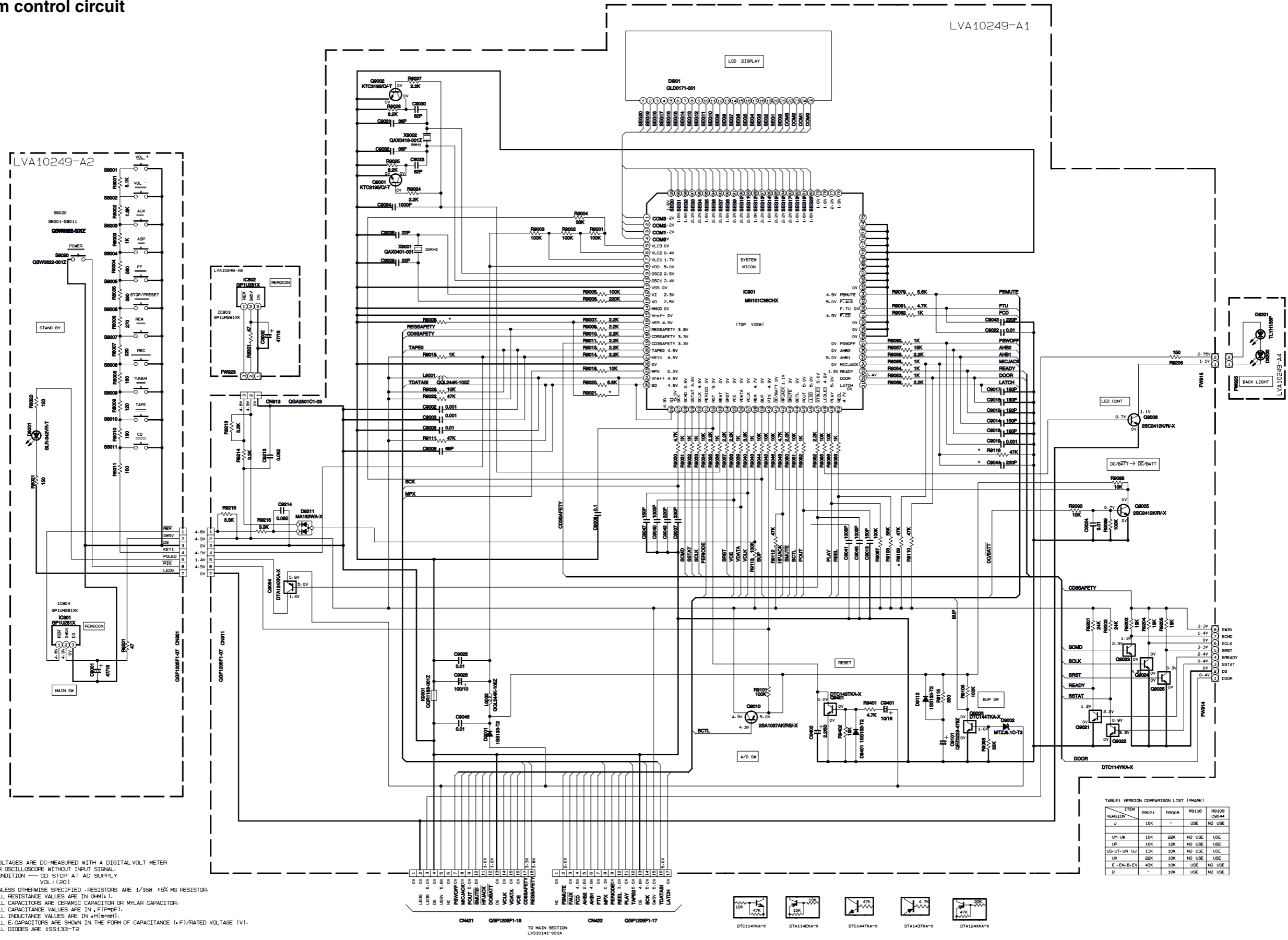


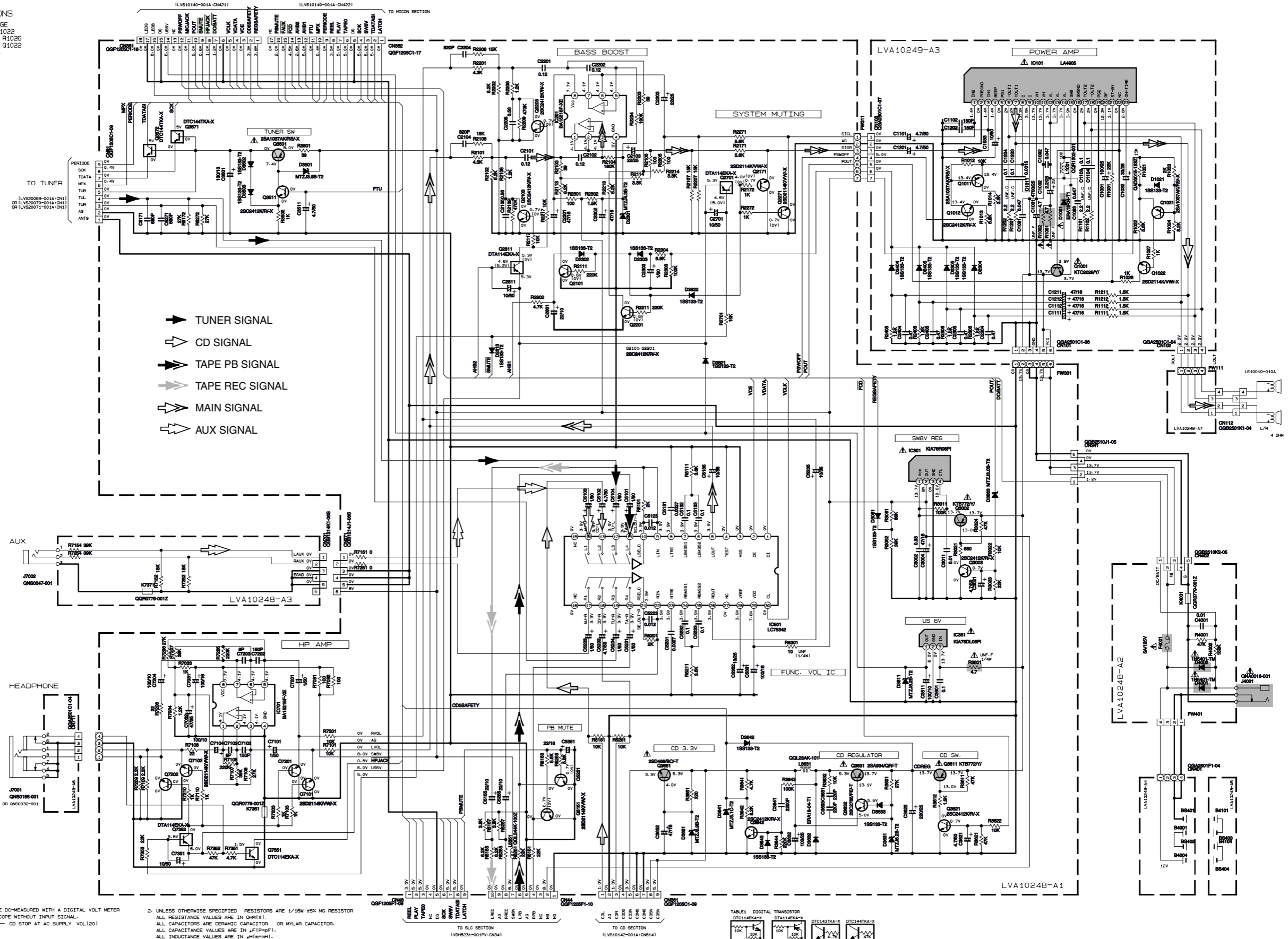
TABLE1 VERSION COMPARISON LIST (MARK)

VERSION	ITEM	R0021	R0008	R0116	R0109
J	C0044	USE	-	USE	NO USE
	UV-LW	10K	20K	NO USE	USE
	UP	10K	10K	NO USE	USE
	US-UT-UN-LU	13K	10K	NO USE	USE
	UX	22K	10K	NO USE	USE
	E-EN-B-EV	43K	10K	USE	NO USE
D		-	10K	USE	NO USE

A B C D E F G H I J

Function amplifier circuit

REVISIONS
 RUNNING CHANGE
 ADD R1021 R1022
 R1023 R1024 R1025
 R1027 Q1021 Q1022
 D3063 D1021.



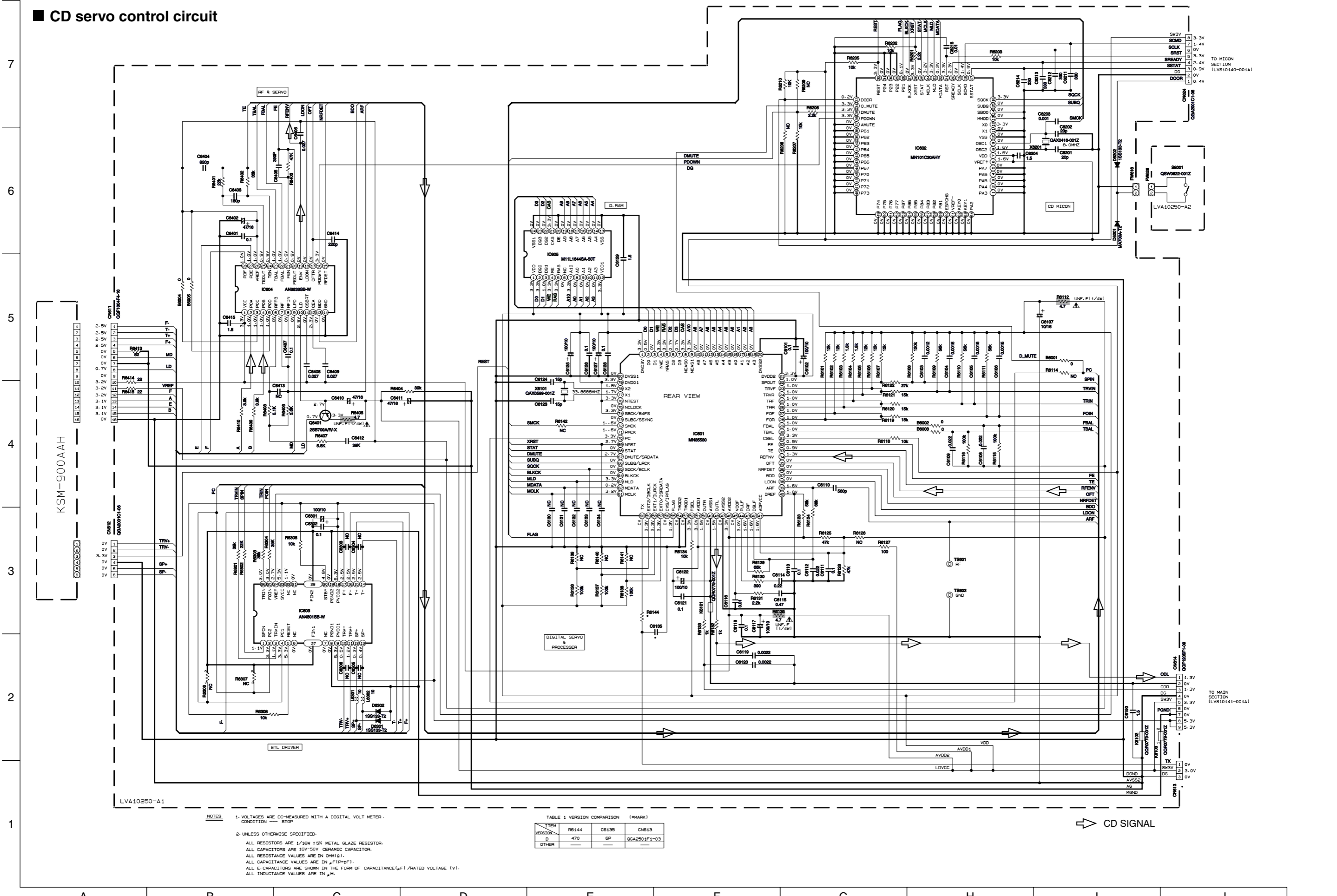
NOTES

- VOLTAGES ARE DC-MEASURED WITH A DIGITAL VOLT METER OR OSCILLOSCOPE WITHOUT INPUT SIGNAL.
 CONDITION — CD STOP AT AC SUPPLY VOL(120)
- UNLESS OTHERWISE SPECIFIED RESISTORS ARE 1/16W ±5% MG RESISTOR
 ALL RESISTANCE VALUES ARE IN OHM(Ω).
 ALL CAPACITORS ARE CERAMIC CAPACITOR OR MYLAR CAPACITOR.
 ALL CAPACITANCE VALUES ARE IN μF(P-P-P).
 ALL INDUCTANCE VALUES ARE IN μH(M-H).
 ALL E-CAPACITORS ARE SHOWN IN THE FORM OF CAPACITANCE (μF)/RATED VOLTAGE (V).
 ALL DIODES ARE 1SS133-T2

TABLE 1 DIGITAL TRANSISTOR

DT114EK4-X	DT114EK4-Y	DT114EK4-Z	DT114EK4-W

CD servo control circuit



NOTES

1. VOLTAGES ARE DC-MEASURED WITH A DIGITAL VOLT METER. CONDITION --- STOP
2. UNLESS OTHERWISE SPECIFIED.
 - ALL RESISTORS ARE 1/16W ±5% METAL GLAZE RESISTOR.
 - ALL CAPACITORS ARE 1KV-50V CERAMIC CAPACITOR.
 - ALL RESISTANCE VALUES ARE IN Ω(M).G).
 - ALL CAPACITANCE VALUES ARE IN μF(PpP).
 - ALL E. CAPACITORS ARE SHOWN IN THE FORM OF CAPACITANCE(μF)/RATED VOLTAGE (V).
 - ALL INDUCTANCE VALUES ARE IN μH.

TABLE 1 VERSION COMPARISON (*MARK)

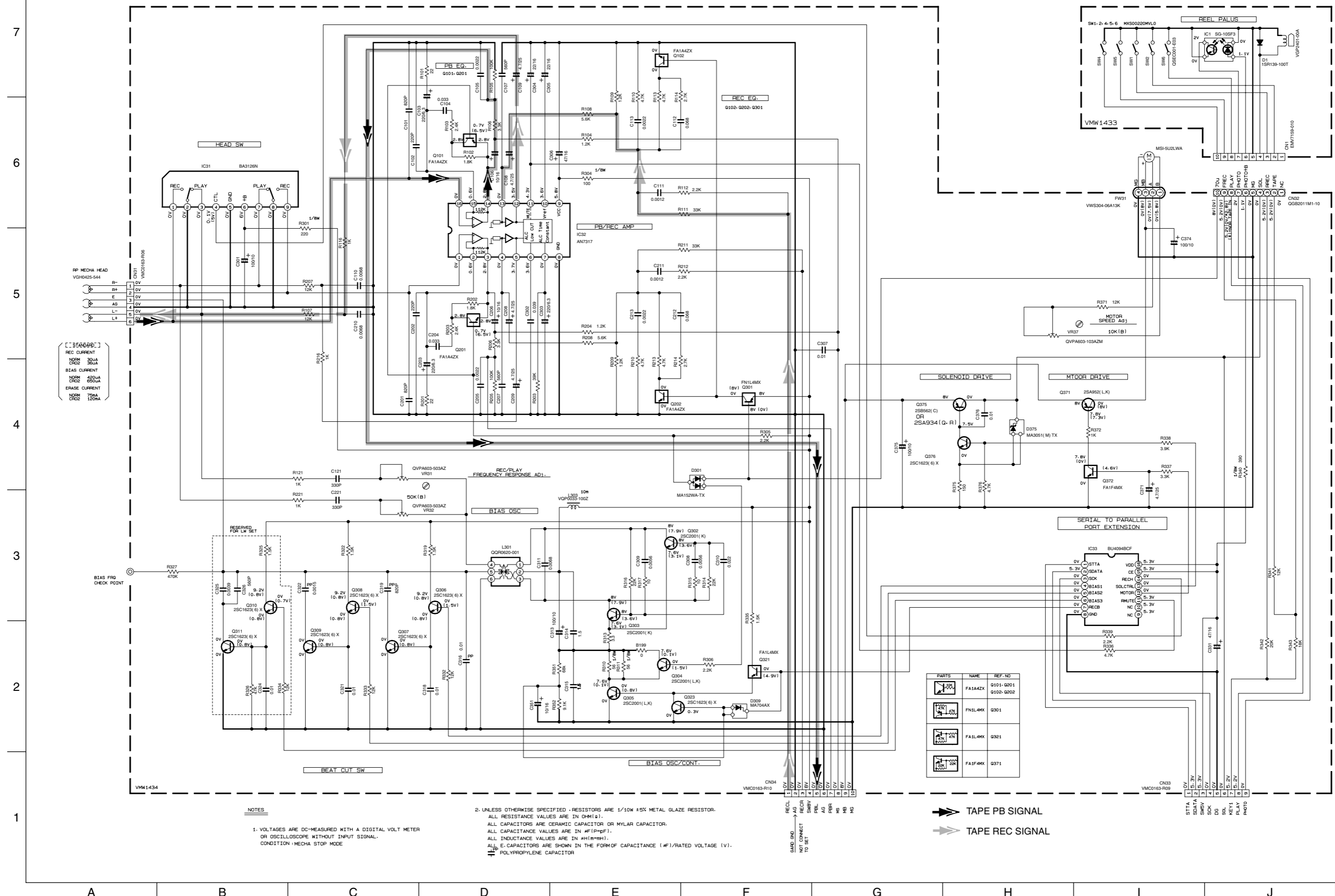
ITEM	R6144	C6135	C6113
D	470	6P	6SA2501F1-03
OTHER			

TO MICON SECTION (LV510140-001A)

TO MAIN SECTION (LV510141-001A)

CD SIGNAL

Cassette amplifier section



- REC CURRENT
- NORM CHRG 300A
- BIAS CURRENT
- NORM CHRG 450A
- ERASE CURRENT
- NORM CHRG 750A
- 1200A

NOTES

- VOLTAGES ARE DC-MEASURED WITH A DIGITAL VOLT METER OR OSCILLOSCOPE WITHOUT INPUT SIGNAL-CONDITION MECHA STOP MODE
- UNLESS OTHERWISE SPECIFIED - RESISTORS ARE 1/10W ±5% METAL GLAZE RESISTOR. ALL CAPACITORS ARE CERAMIC CAPACITOR OR MYLAR CAPACITOR. ALL CAPACITANCE VALUES ARE IN #F(P#PF). ALL INDUCTANCE VALUES ARE IN #H(M#MH). ALL E-CAPACITORS ARE SHOWN IN THE FORM OF CAPACITANCE (#F)/RATED VOLTAGE (V). POLYPROPYLENE CAPACITOR

PARTS	NAME	REF. NO
[Symbol]	FA1A4ZX	G101-G201
[Symbol]	FN1L4MX	G301
[Symbol]	FA1L4MX	G301
[Symbol]	FA1F4MX	G371

- TAPE PB SIGNAL
- TAPE REC SIGNAL

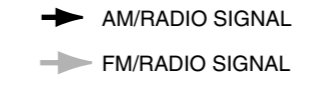
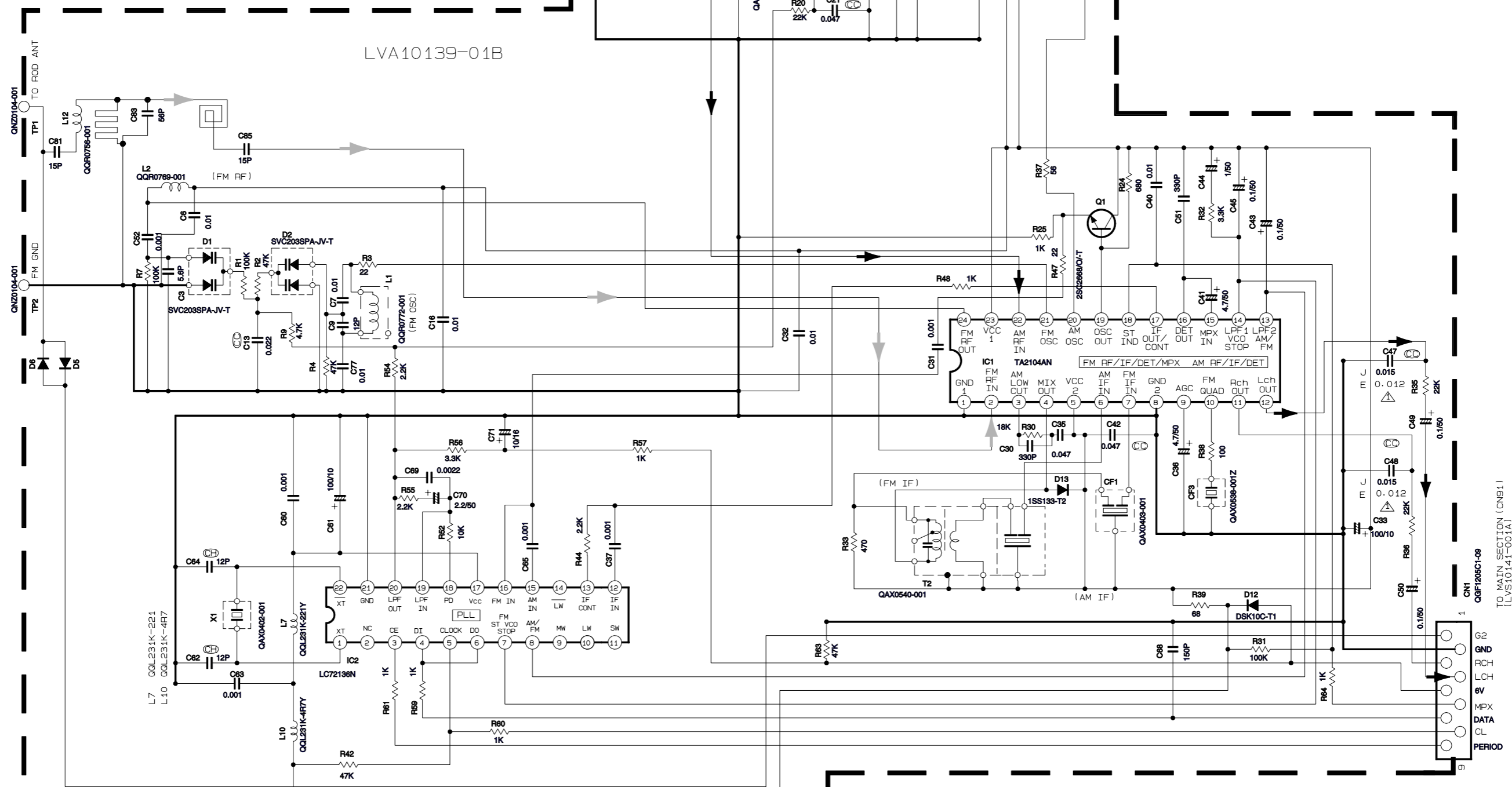
7
6
5
4
3
2
1

A B C D E F G H I J

■ Tuner circuit

PIN NO	1	2	3	4	5	6	7	8	9	10	11	12	13	14	15	16	17	18	19	20	21	22	23	24
IC1	FM NO SIGNAL 88MHz	0	0.6	0	3.6	4	3.5	4	0	0.6	3.2	1.2	1.2	3.4	3.3	0.7	1.4	1.2	0	3.9	4	4.1	4	4
	FM 60dB STEREO	0	0.8	0.2	3.8	4.1	3.9	4.1	0	3.3	1.2	1.2	3.3	3.4	0.7	1.1	1.4	0.7	4	4.1	4.1	4.1	4.1	4.1
	AM 530KHz NO SIGNAL	0	0	1	4.3	4.3	3.6	4.3	0	0.2	3.9	1.2	1.2	0	0	0.7	1.1	1.2	0.7	4.2	4.3	4.3	4.3	4.3
PIN NO	1	2	3	4	5	6	7	8	9	10	11	12	13	14	15	16	17	18	19	20	21	22		
IC2	FM NO SIGNAL	2.5	0	0	5.1	5.1	5.1	3.5	3.2	3.9	2.5	4.1	0	1.4	1.7	0	2.4	0	0.9	0.9	1.5	0	2	
TR NO																								
PIN NO	E	C	B																					
	AM 530KHz NO SIGNAL	3.4	4.3	4.2																				
	AM 1440KHz NO SIGNAL	3.4	4.3	4.2																				

- NOTES
1. VOLTAGES ARE DC-MEASURED WITH A DIGITAL VOLT METER
 2. ALL RESISTORS ARE 1/4W 5% CARBON RESISTOR.
 3. ALL RESISTANCE VALUES ARE IN OHM(Ω).
 4. ALL CAPACITANCE VALUES ARE IN #F(P=PF).
 5. ALL E-CAPS ARE SHOWN IN THE FORM OF CAPACITANCE (#F)/RATED VOLTAGE (V).
 6. ALL INDUCTANCE VALUES ARE IN #H(m=MH)



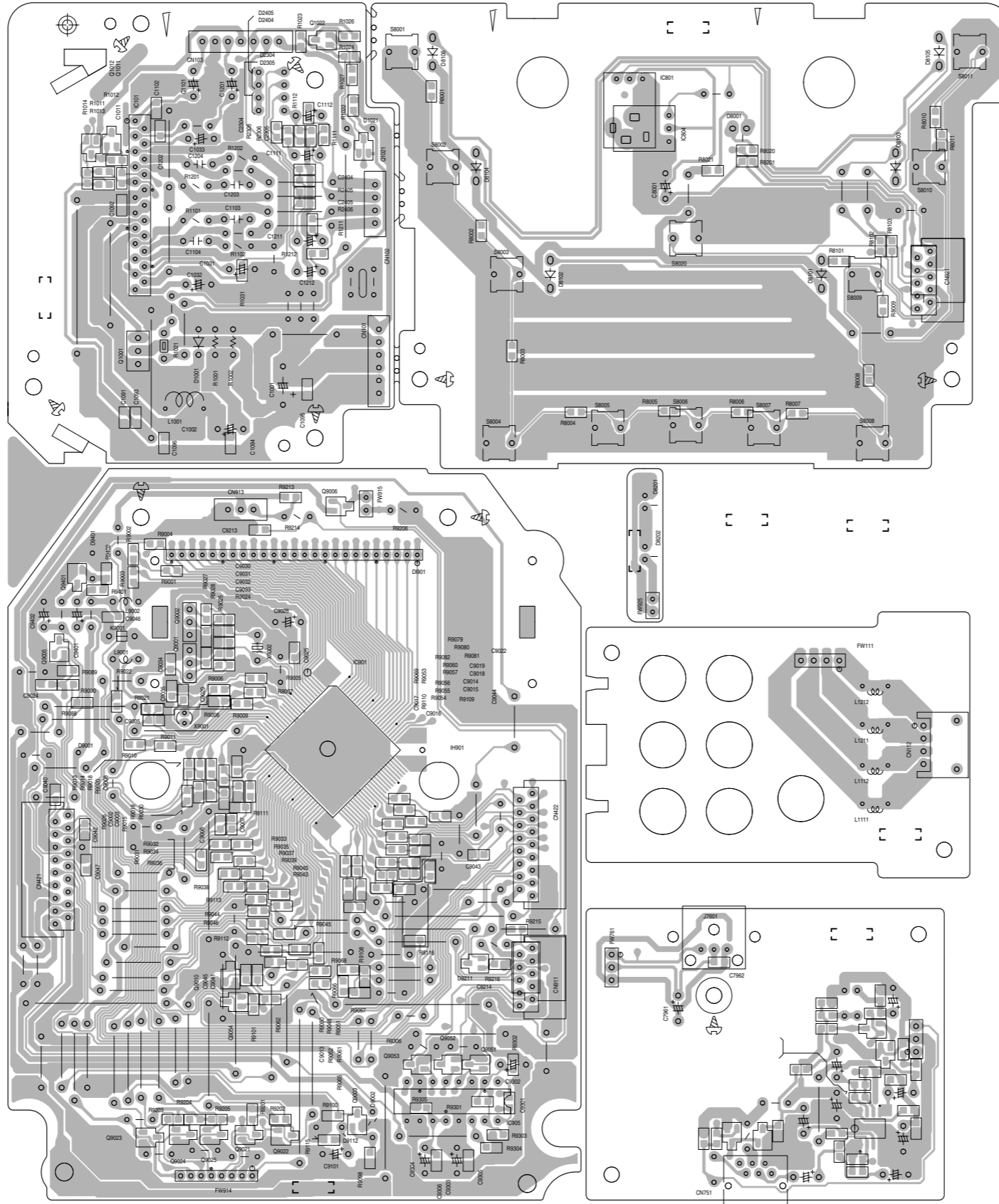
Printed circuit boards

■ Micom board

Block No.

0	2
---	---

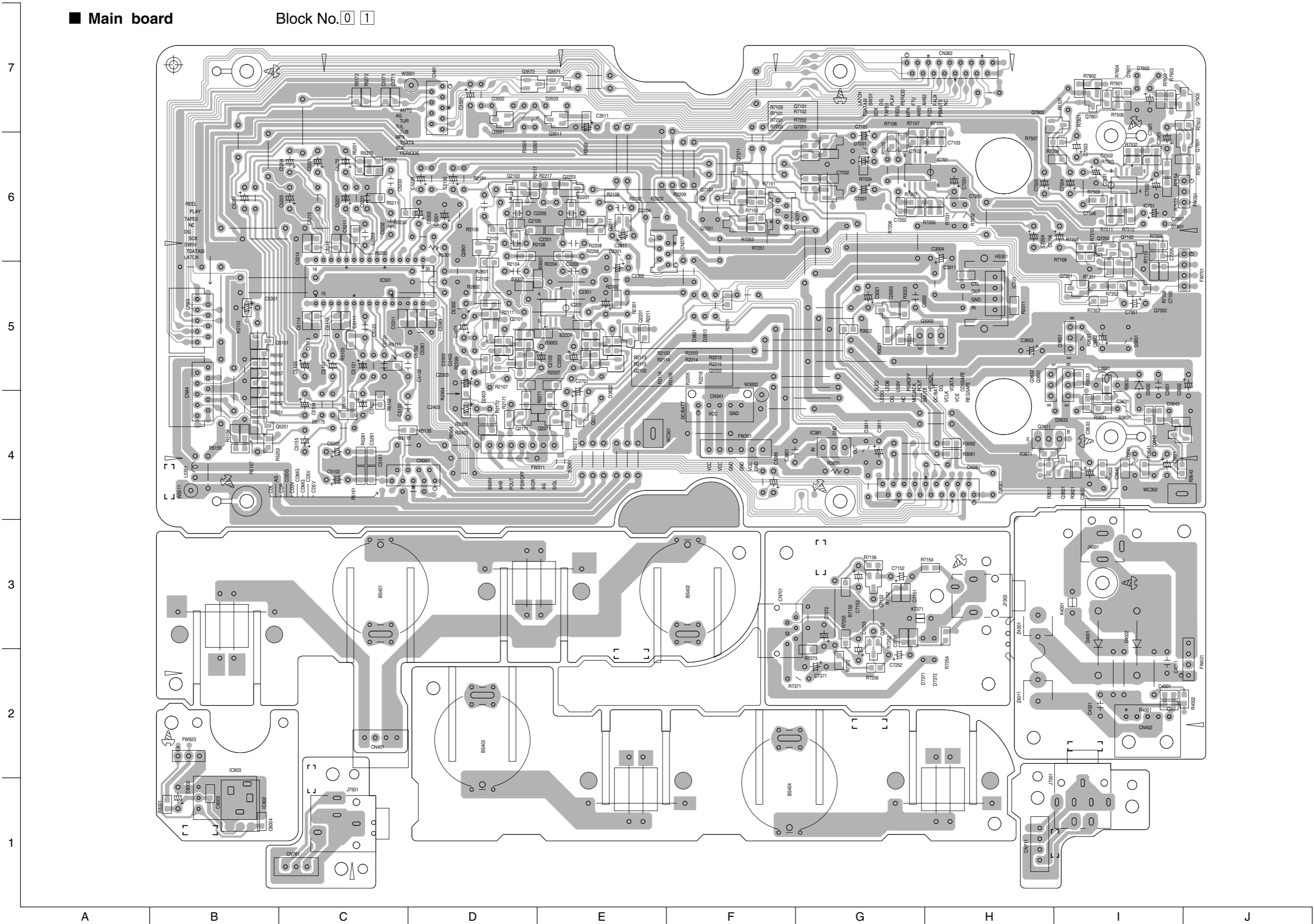
7
6
5
4
3
2
1



A B C D E F G H I J

■ Main board

Block No. 0 1

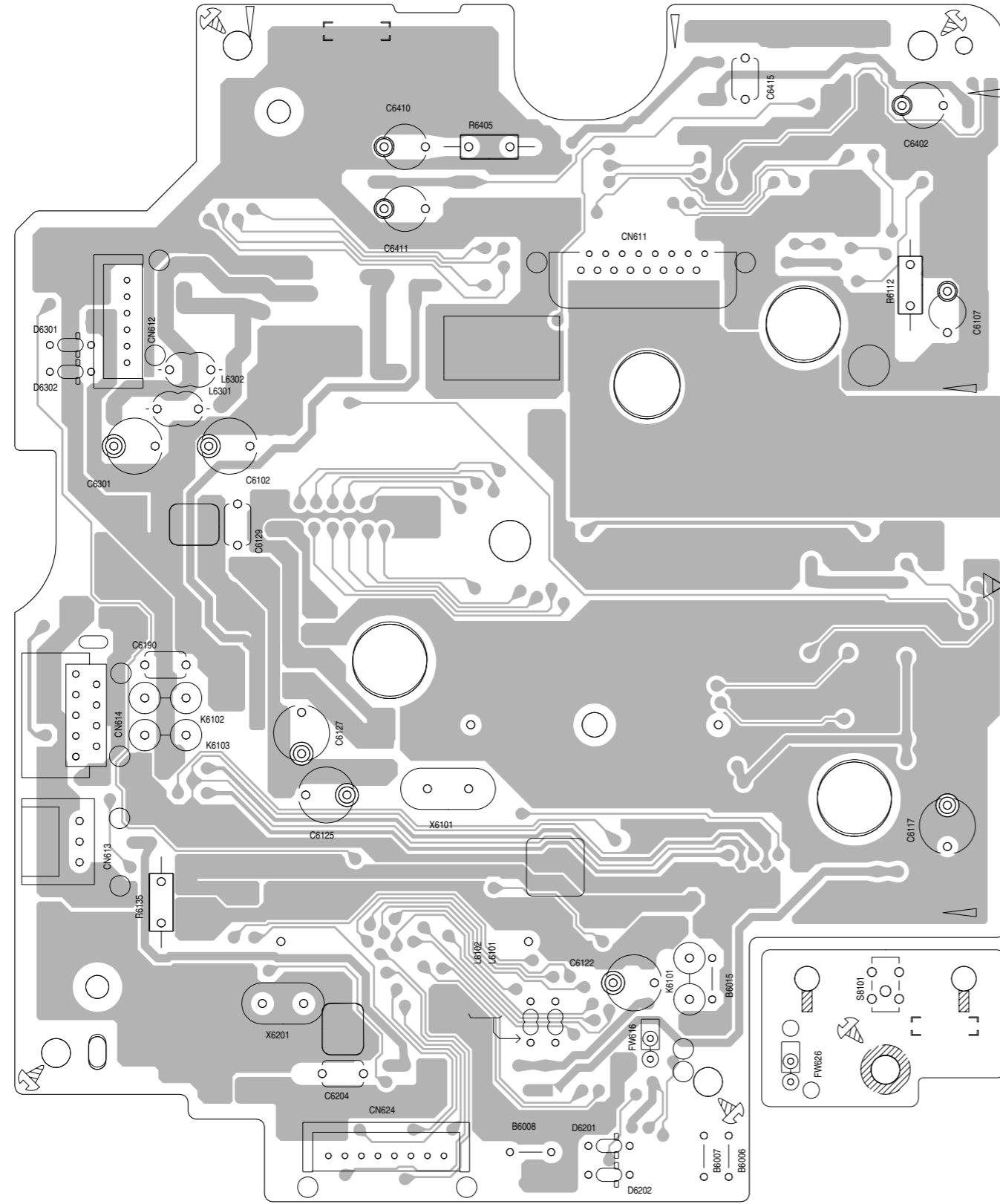


■ CD servo board

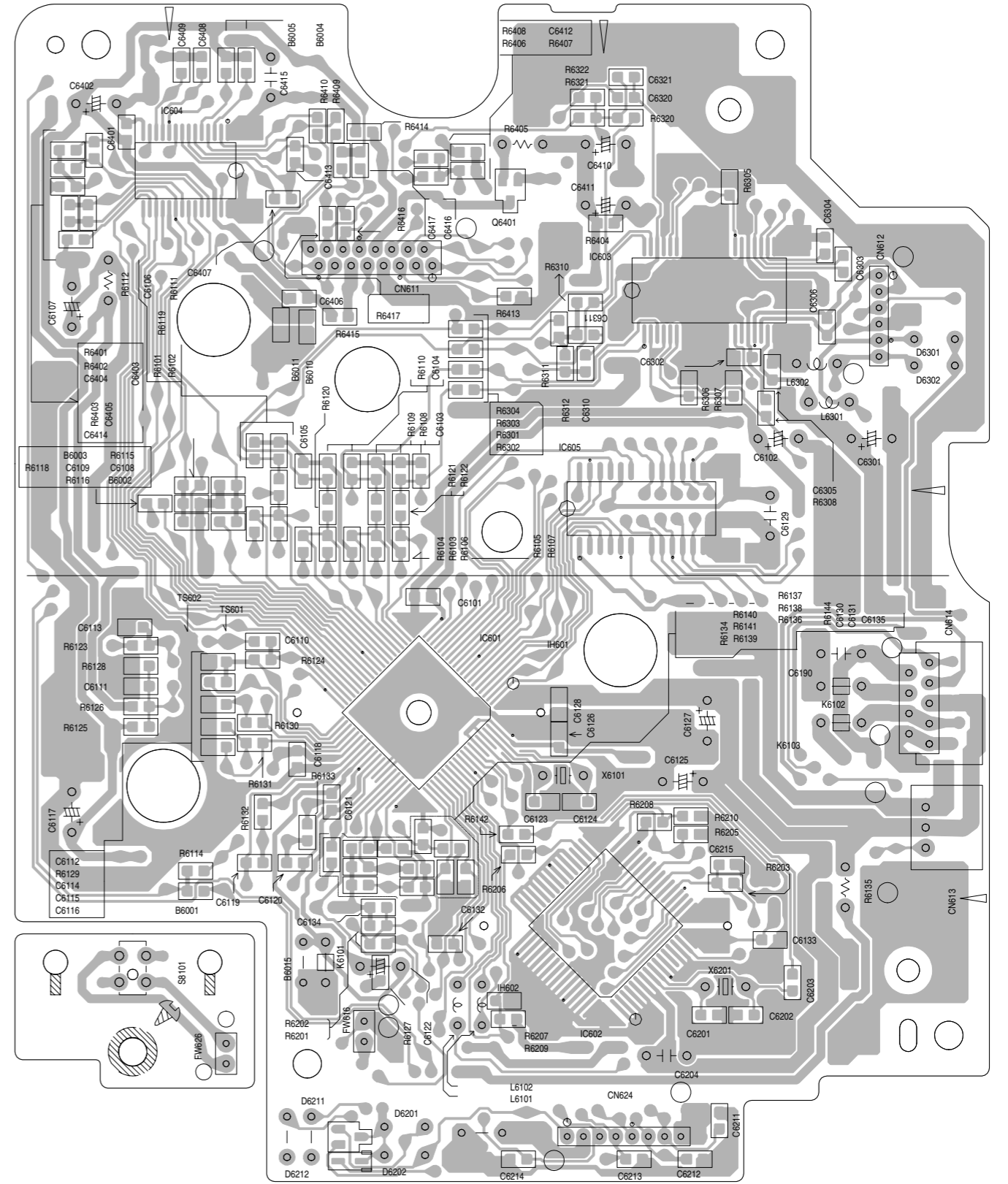
Block No. 0 3

7
6
5
4
3
2
1

Top view



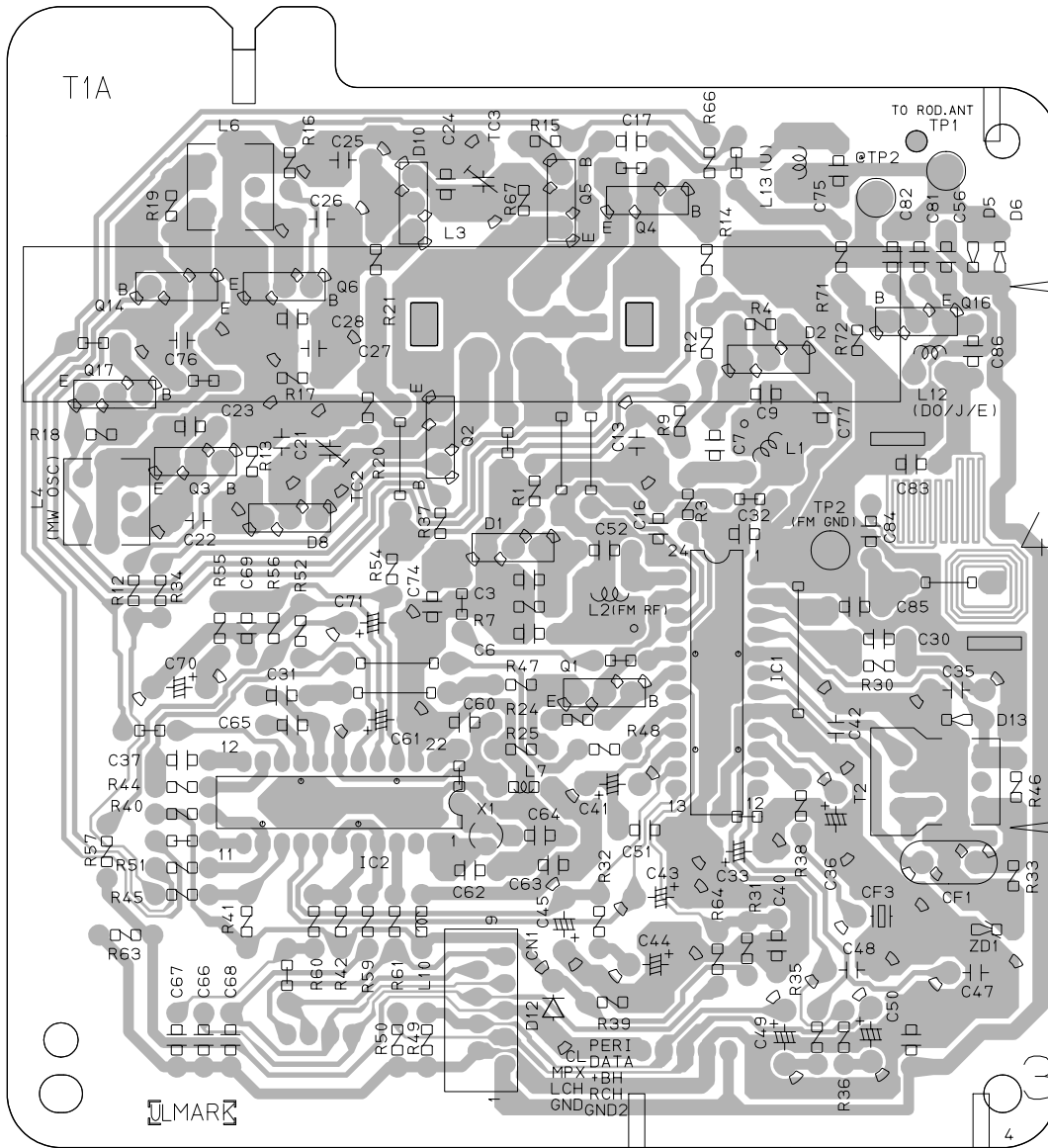
Bottom view



A B C D E F G H I J

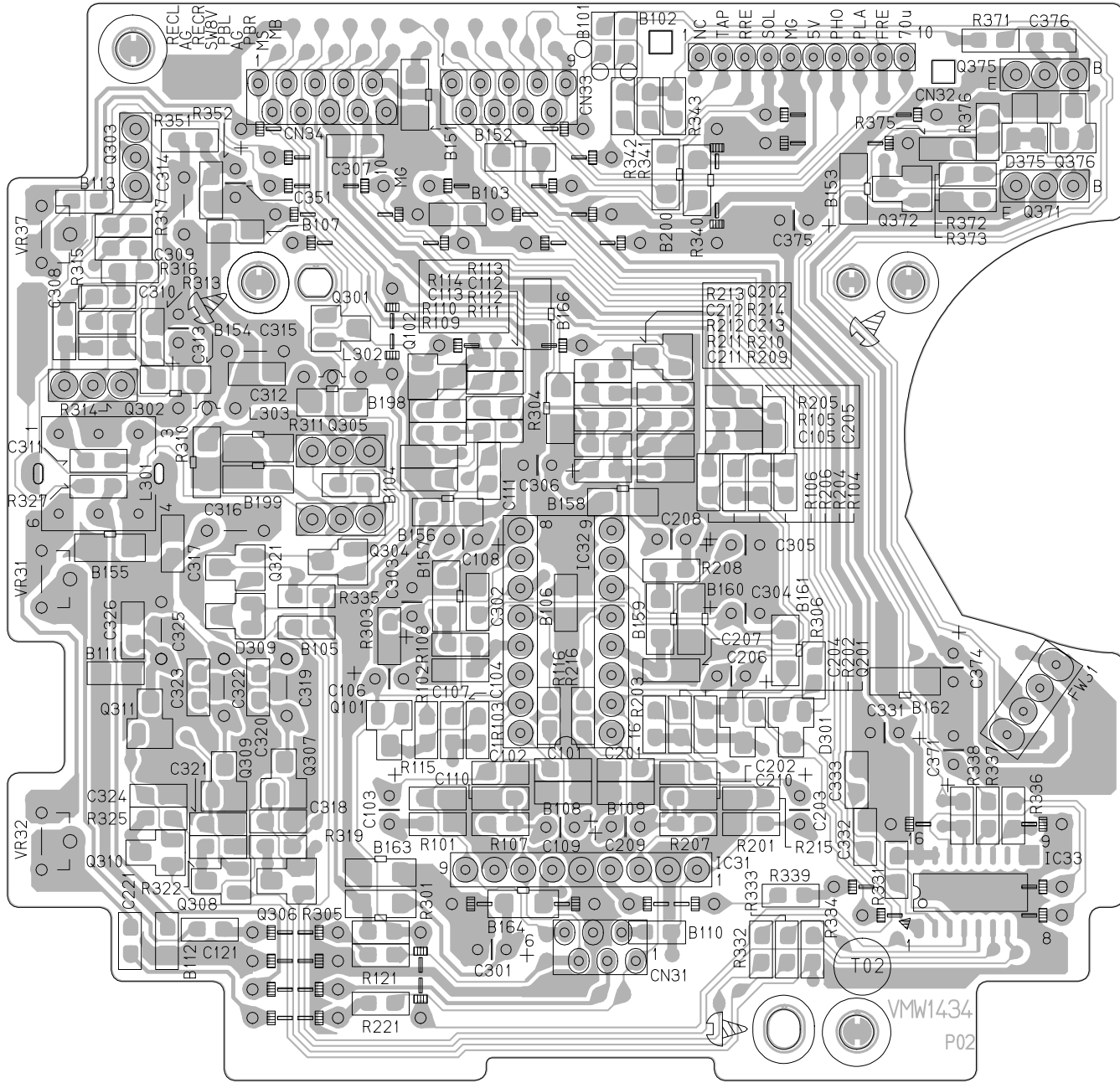
■ Tuner Board

Block No. 0 4



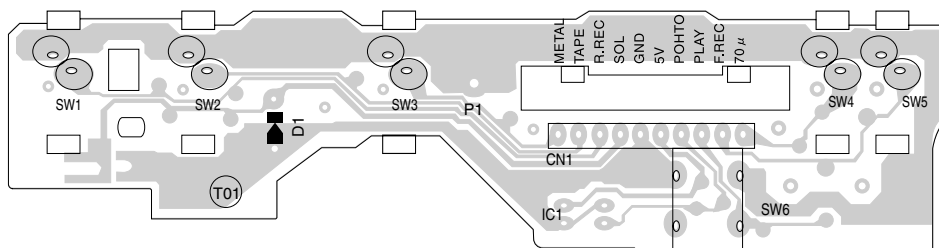
■ Head amplifier & mechanism board

Block No. 0 5



■ Cassette switch board

Block No. 0 6



— MEMO —